



SAILUN

TRUCK & BUS TYRE CATALOGUE

LONG HAUL | HYBRID | REGIONAL | ON/OFF ROAD | COACH | OFF ROAD | URBAN | WINTER



SAILUN GROUP

Stock Code: 601058



Ranked 10th among global tyre manufacturers

WHY SAILUN ?

GLOBAL INTELLIGENT MANUFACTURING

Sailun has 7 smart tyre production plants located in China, Vietnam and Cambodia. These factories utilise big data cloud platforms which are tailored to not only meet tyre production demand but also keep pace with the organisation's rapid growth. This allows for the real time optimisation and intelligent management of manufacturing and supply chain networks in order to improve the quality and efficiency of operations.

LEADING RESEARCH AND DEVELOPMENT SYSTEM

Sailun continues to invest globally with established R&D centres in Qingdao, Vietnam, Europe and North America. This local presence ensures a strong understanding of the local environment and ensures the needs of local users are met. Market leading technology is deployed across the global R&D network, which has the capabilities to develop a full product range designed to meet market requirements.



Over 18,000 employees worldwide committed to meeting your needs



Our global facilities include 4 R&D centres, 10 sales centres, and 7 manufacturing centres with products sold in over 180 countries.

SOPHISTICATED PRODUCT DEVELOPMENT

Sailun offers in excess of 10,000 products for PCR, TBR and Specialty applications. These are developed specifically to meet customer and consumer demands. This customer focused approach ensures the correct understanding of product applications, product quality, and whole tyre life cycle.

WORLDWIDE COMPANY WORLDWIDE BRAND

Sailun was founded by senior professors at Qingdao University of Science and Technology, driven by a commitment to innovation. For over 20 years, we continue to grow and “Make Great Tyres” through advanced research and development. This dedication has led to breakthroughs like EcoPoint³ technology and earned the trust of users worldwide.

LOCALISED CUSTOMER SUPPORT

Sailun continues to maintain the business strategy of “Think Global, Act Local”. Customer Support channels have been established around the world including Toronto, Boston, Germany, Amsterdam, Vietnam, Dubai, Brazil, Spain, the UK and more. All locations are equipped to provide technical, sales, and marketing functions.

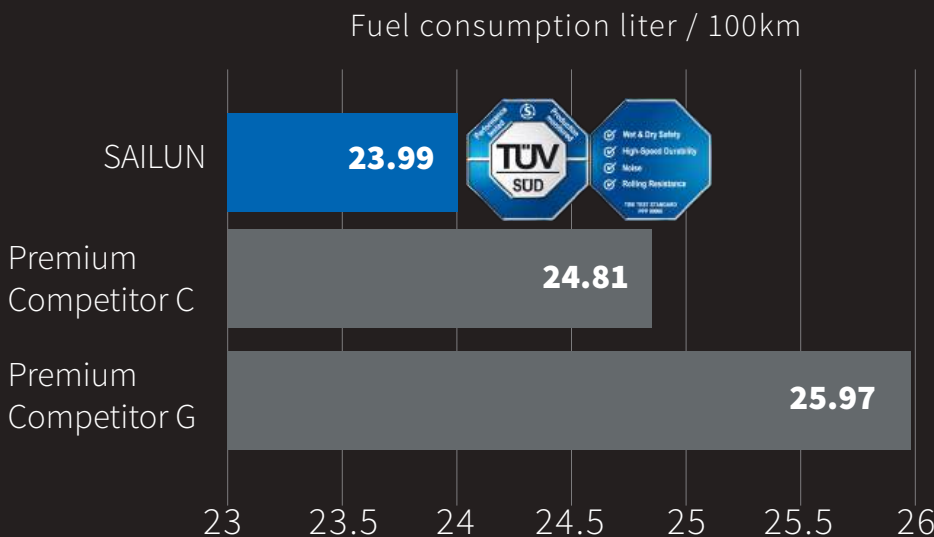
Introducing an industry leading innovation in sustainable compound technology, crafted through our cutting-edge mixing process.

This advanced solution is engineered to enhance the three core aspects of tyre performance—safety, longevity, and energy efficiency—without compromising any other aspects of performance.

- 1. Based on TUV SUD Fuel Economy Testing, internal lab tests, and EU Tyre Labeling benchmarks.
- 2. EU Label Grade A-B.
- 3. Sailun internal field tests in China & Europe, 2022-2023.
- 4. Sailun 2024 Sustainability Report. ISO 14001-certified plants. EU Tyre Label A-B rated for energy efficiency. CRIA 2023, ranked among China's top 3 tyre brands for sustainability.



Performance



Premium Performance.

Revolutionary and sustainable EcoPoint³ technology significantly reduces fuel consumption, environmental impact and CO₂ output.

TUV SUD Approved best energy efficiency, consumption less than 24L / 100km.

ency

oPoint³
TECHNOLOGY



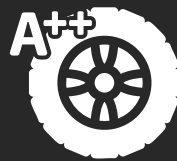
Cut Costs, Go Further

Reduce rolling resistance by up to **20%** for **3-8%** better fuel economy.¹



Reliable Grip, Rain or Shine

EU Grade **A-B** for wet braking.²



Fewer Replacements, More Uptime

10-30% improved tread life based on application vs standard tyres.³

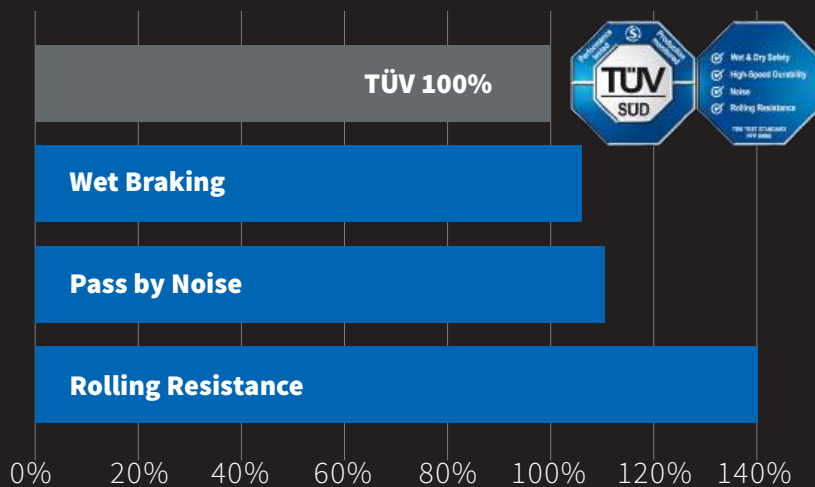


Green Miles, Cleaner Profit

31.8% sustainable materials and low-CO₂ manufacturing.⁴

Durability

Sailun Gen-2 Long Haul Products



Awarded TÜV seal for safety and efficiency.

*Sailun ECOMAX PRO S, Sailun ECOMAX PRO D, Sailun ECOMAX PRO T.

LONG HAUL

HYBRID

REGIONAL

ON/OFF ROAD

STEER



DRIVE



TRAILER
WIDE BASE TYRE



ALL POSITION



COACH

OFF ROAD

URBAN

WINTER



SDO1
(P53)



SDW1
(P59)



SDW1 NORDIC
(P61)



TOUR PRO Z
(P51)



CITY PRO Z
(P55)



CITY CONVOY
(P57)



SAW1
(P63)

PRODUCTS

LONG HAUL

ECOMAX PRO S / ECOMAX PRO D / SDL1 /
ECOMAX PRO T / STL1

HYBRID

TRANSPORT PRO S / TRANSPORT PRO D

REGIONAL

SFR1 / SDR1 / DELIVERY PRO D / STR1+
TRANSPORT PRO T MAX / SAR1

ON/OFF ROAD

S711 / SDM1 / SDM1S / S913A / TERRA PRO Z
S815 / S825 / STM1

COACH

TOUR PRO Z

OFF ROAD

SDO1

URBAN

CITY PRO Z / CITY CONVOY

WINTER

SDW1 / SDW1 NORDIC / SAW1



LONG HAUL

NEW!

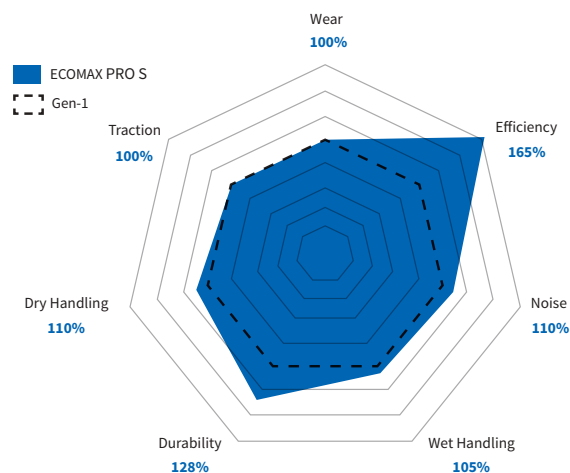


ECOMAX PRO S



Steer axle tyre designed for long-distance travel, motorways and national operations.

- Drive further with improved fuel efficiency
- Reduce CO₂ emissions and lower environmental impact
- Suitable for electric vehicles



Premium energy efficiency with ultra-low rolling resistance

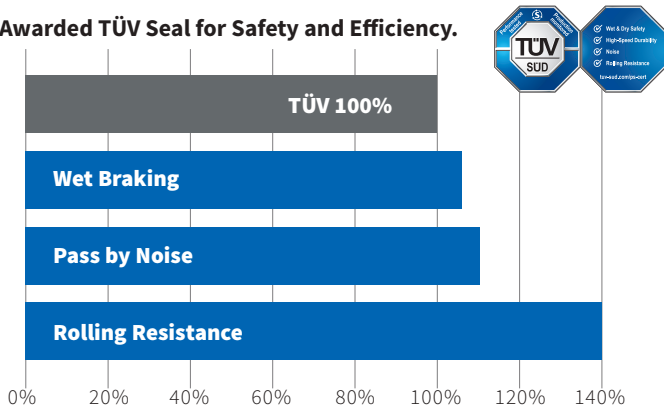
Size	Ply Rating	Load Index	Speed Rating	EPREL Codes	RR	WG	NG Db	NG	Certificate Type
295/60R22.5	18	150/147	L	1263633	B	B	71	A	M+S/3PMSF
315/60R22.5	20	156/150	L	1398668	B	B	71	A	M+S/3PMSF
315/70R22.5	18	156/150	L	1263642	A	B	71	A	M+S/3PMSF
315/80R22.5	18	158/150	L	1892759	A	B	71	A	M+S/3PMSF

Best-in-Class Efficiency: Wider tread blocks coupled with EcoPoint³ technology effectively reduce rolling resistance, achieving an A-level rating and enhancing fuel efficiency.

Superior Control: The incorporation of bionic tree leaf sipes and groove edge notches enhance wet grip and dry handling stability, ensuring a safe journey.

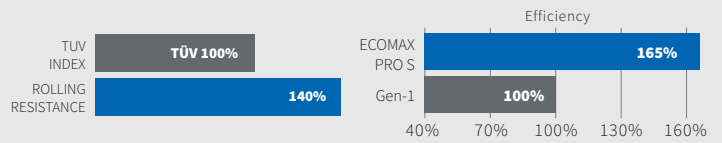
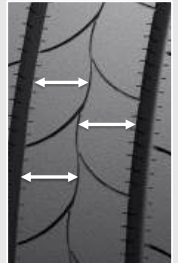
Mileage: The optimised and widened tread pattern blocks reduce heat build-up, whilst the latest generation rubber compound delivers long tyre life.

Awarded TÜV Seal for Safety and Efficiency.



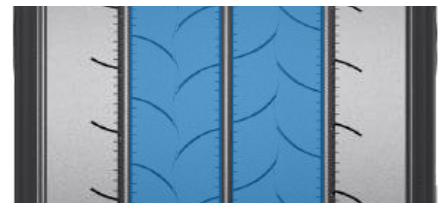
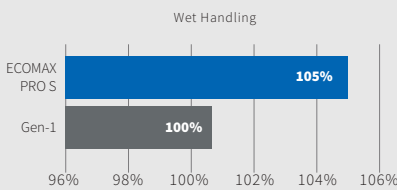
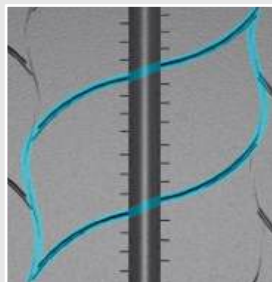
Best-in-Class Efficiency.

Wider tread blocks, together with EcoPoint³ technology, effectively reduce rolling resistance. Combined with the advanced pattern design, anti-slip performance is improved while energy efficiency is maximised.



Superior Control and Grip.

The incorporation of bionic tree leaf sipes and groove edge notches enhance wet grip and dry handling stability, ensuring a safe journey.

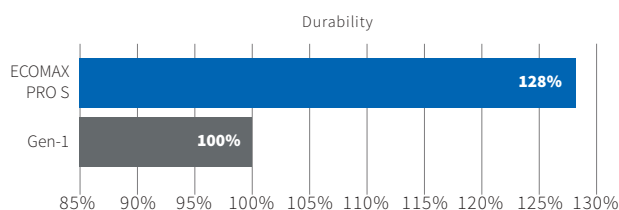


Fuel Saving with Low Rolling Resistance Technology.

The innovative three main grooves and optimised tread block-to-groove ratio have resulted in the highest EU label rating for fuel economy, A.

Wider Tread Improves Mileage and Wear.

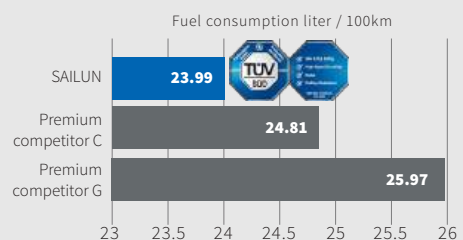
Wide tread design that maximises the use of high-quality rubber, improved rigidity, and enhanced handling stability to ensure a longer tread life as well as even shoulder wear.



Premium Performance.



Revolutionary and sustainable EcoPoint³ technology significantly reduces fuel consumption, environmental impact and CO₂ output.



*TÜV SÜD-Approved. Best energy efficiency, consumption less than 24L/100km.

LONG HAUL



NEW!



- ✓ Wet & Dry Safety
 - ✓ High-Speed Durability
 - ✓ Noise
 - ✓ Rolling Resistance
- tuv-sud.com/ps-cert

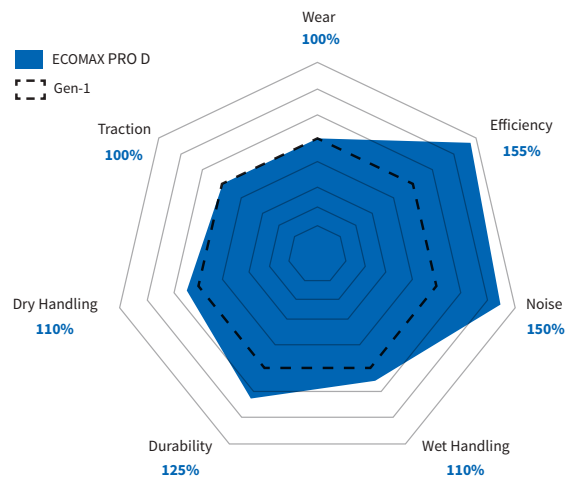


ECOMAX PRO D



Drive axle tyre designed for long-distance travel, motorways and national operations.

- Drive further with improved fuel efficiency
- Reduce CO₂ emissions and lower environmental impact
- Suitable for electric vehicles



Premium energy efficiency with ultra-low rolling resistance

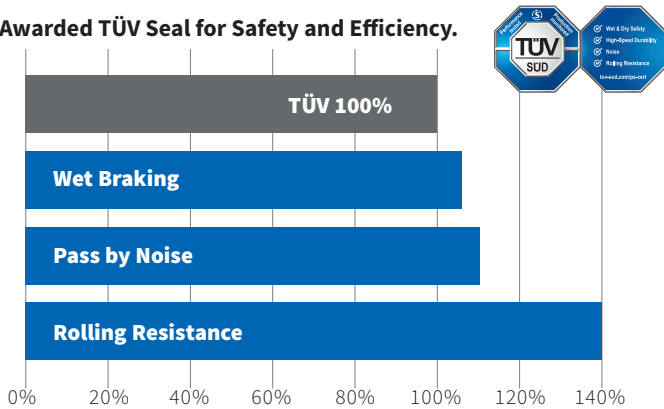
Size	Ply Rating	Load Index	Speed Rating	EPREL Codes	RR	WG	NG Db	NG	Certificate Type
295/60R22.5	18	150/147	L	1516966	B	B	73	A	M+S/3PMSF/TRACTION
315/60R22.5	18	152/148	L	1516980	B	B	73	A	M+S/3PMSF/TRACTION
315/70R22.5	18	156/150	L	1264028	A	B	72	A	M+S/3PMSF/TRACTION
315/80R22.5	18	156/150(154/150)	L(M)	1892751	A	B	73	A	M+S/3PMSF/TRACTION

Superior Efficiency: The incorporation of wider tread blocks, along with EcoPoint³ technology, significantly reduce rolling resistance, achieving an A-level rating. This advancement leads to a significant improvement in fuel efficiency compared to the previous generation.

More Traction: The open shoulder design and lateral grooves offer superior traction and effective heat dispersion. This design not only enhances safety but also ensures prolonged tyre lifespan.

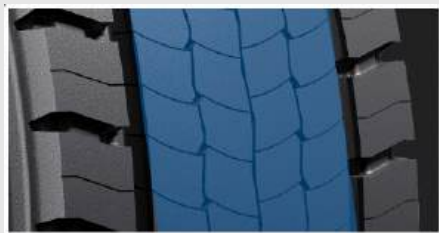
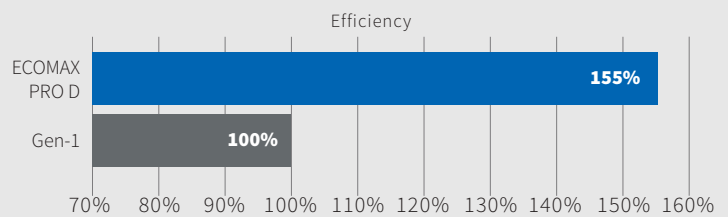
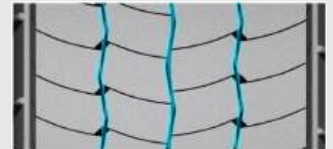
Mileage: Optimised tread rigidity promotes even shoulder wear, extending mileage. Variable tread pitches reduce noise, ensuring a comfortable driving experience.

Awarded TÜV Seal for Safety and Efficiency.



Efficiency and Traction.

The wavy design of the central grooves interlocks the tread blocks, improving rolling resistance and enhancing traction.

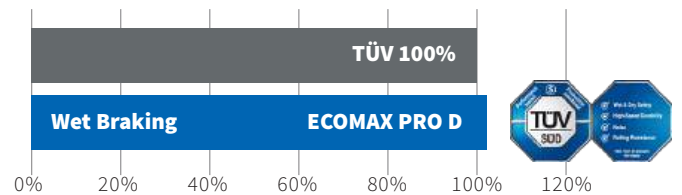
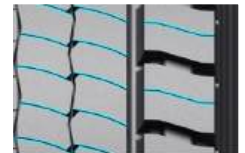


Optimised Block Design and Fuel Efficiency.

The compact central tread blocks are wider compared to the previous model, enhancing rigidity and achieving best-in-class rolling resistance.

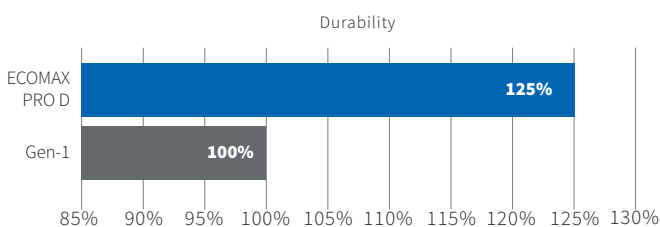
Superior Wet Grip and Traction.

The open shoulder design and lateral grooves offer superior traction and effective heat dispersion. Connected shoulder block ribs boost rigidity improving durability and preventing irregular wear.



Wider Tread Improves Mileage and Wear.

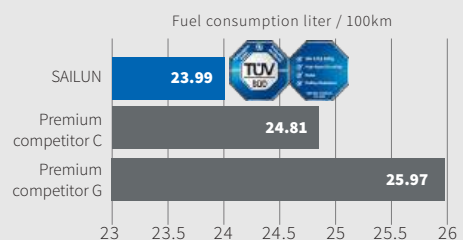
The wider tread design enhances tyre rigidity and improves handling stability, offering a longer tread life.



Premium Performance.



Revolutionary and sustainable EcoPoint³ technology significantly reduces fuel consumption, environmental impact and CO₂ output.



*TÜV SÜD-Approved. Best energy efficiency, consumption less than 24L/100km.



SDL1



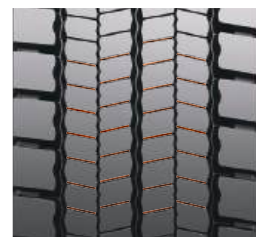
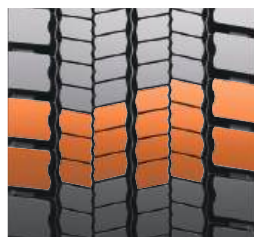
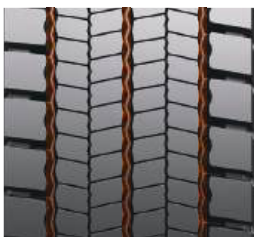
The SDL1 is a drive-position tyre for long-distance transportation applications. The specialised rubber tread compound provides excellent anti-scrub resistance. The varied pitch tread design and narrow horizontal grooves effectively reduce tyre noise for a more comfortable ride.

Size	Ply Rating	Load Index	Speed Rating	EPREL Codes	RR	WG	NG Db	NG	Certificate Type
295/80R22.5	16	152/148	M	573370	D	C	75	B	M+S/3PMSF/TRACTION
315/70R22.5	18	154/150(152/148)	L(M)	573916	D	C	75	B	M+S/3PMSF/TRACTION
315/80R22.5	18	156/150(154/150)	L(M)	573381	D	C	75	B	M+S/3PMSF/TRACTION



FEATURES & BENEFITS:

- Three main tread grooves provide excellent handling stability for a more comfortable ride.
- Widened tread-to-road contact surface evens out pressure for improved driving stability.
- Narrow grooves are optimised to reduce noise levels.






NEW!



- ✓ Wet & Dry Safety
 - ✓ High-Speed Durability
 - ✓ Noise
 - ✓ Rolling Resistance
- tuvsud.com/ps-cert

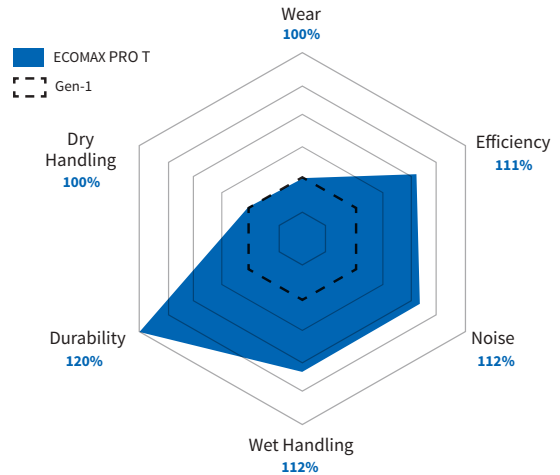
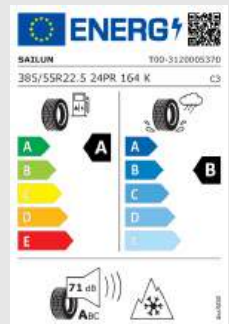


ECOMAX PRO T



Trailer axle tyre designed for long-distance travel, motorways and national operations.

- Drive further with improved fuel efficiency
- Reduce CO₂ emissions and lower environmental impact
- Suitable for electric vehicles



Premium energy efficiency with ultra-low rolling resistance

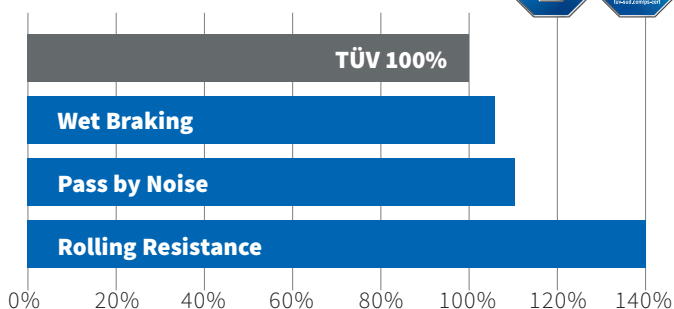
Size	Ply Rating	Load Index	Speed Rating	EPREL Codes	RR	WG	NG Db	NG	Certificate Type
385/55R22.5	20	160(158)	K(L)	1883121	A	B	71	A	M+S/3PMSF
385/55R22.5	24	164	K	1883131	A	B	71	A	M+S/3PMSF
385/65R22.5	20	160(158)	K(L)	1264030	A	B	71	A	M+S/3PMSF
435/50R19.5	20	160	J	1883132	A	A	71	A	M+S/3PMSF
435/50R19.5	24	164	J						under development
445/45R19.5	20	160	J	1883133	A	A	71	A	M+S/3PMSF

Best-in-Class Efficiency: Wider tread blocks with EcoPoint³ technology significantly reduces rolling resistance, achieving an A-level rating and improving fuel efficiency.

Wear: New casing construction and wider tread blocks enhance tyre wear and longevity.

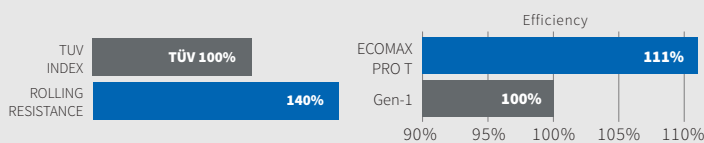
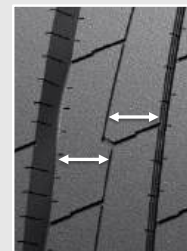
Mileage: Lateral and longitudinal pattern crosses enhance water evacuation ensuring optimal wet performance. Certified 3PMSF for all conditions.

Awarded TÜV Seal for Safety and Efficiency.



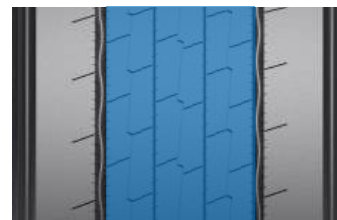
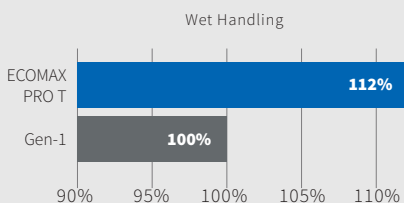
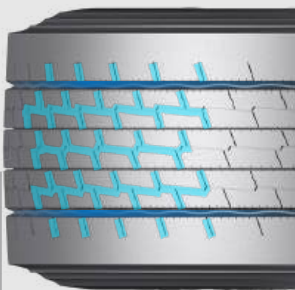
Best-in-Class Efficiency.

Wider tread blocks and a condensed groove-to-block ratio, paired with EcoPoint³ technology, significantly reduce rolling resistance to achieve an A-level rating.



Excellent Safety in Dry and Wet.

Lateral and longitudinal pattern crosses enhance water evacuation, ensuring optimal performance on both dry and wet roads.

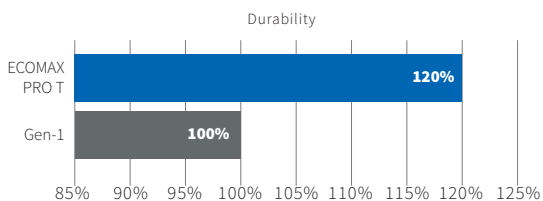


Fuel Saving with Low Rolling Resistance Technology.

The innovative three main grooves and optimised tread block-to-groove ratio have resulted in the highest A-level EU label rating for fuel economy.

Wider Tread Improves Mileage and Wear.

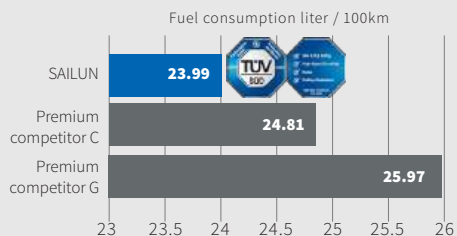
Wide tread design that maximises the use of high-quality rubber, improved rigidity, and enhanced handling stability to ensure a longer tread life as well as even shoulder wear.



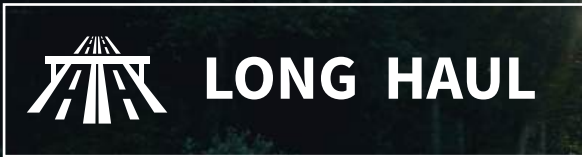
Premium Performance.



Revolutionary and sustainable EcoPoint³ technology significantly reduces fuel consumption, environmental impact and CO₂ output.



*TUV SUD Approved best energy efficiency, consumption less than 24L / 100km



STL1



The STL1 is recommended for long-haul applications.

Tread rubber compounding significantly reduces heat build-up. Extremely low rolling resistance improves fuel economy. Variable pitch tread and narrow groove design effectively reduce noise levels.

Size	Ply Rating	Load Index	Speed Rating	EPREL Codes	RR	WG	NG Db	NG	Certificate Type
385/55R19.5	18	156	J	553394	B	B	72	B	M+S/3PMSF
385/55R22.5	20	160(158)	K(L)	553392	B	B	72	B	M+S/3PMSF
385/65R22.5	20	160(158)	K(L)	547136	B	B	71	A	M+S/3PMSF
385/65R22.5	20	164(158)	K(L)	547147	B	B	71	A	M+S/3PMSF
435/50R19.5	20	160	J	573363	B	C	72	B	M+S/3PMSF
445/45R19.5	20	160	J	573373	B	C	72	B	M+S/3PMSF
445/45R19.5	20	160	J	573373	B	C	72	B	M+S/3PMSF



FEATURES & BENEFITS:

- Small notch and sipe design effectively improve water drainage and sound absorption.
- Narrowed central groove increases effective tyre footprint and promotes even wear.
- Design of the two wide main grooves improves water drainage and overall handling.





HYBRID



NEW!

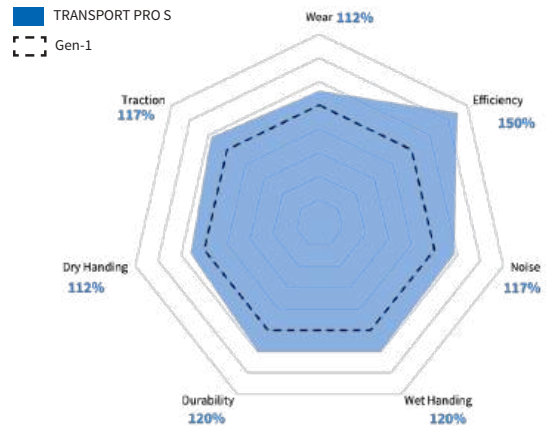
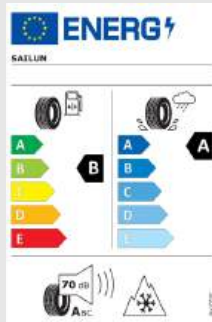


TRANSPORT PRO S



Steer axle tyre designed for motorways, national and regional operations.

- Long tyre life and enhanced fuel savings
- Lower CO₂ impact
- Durability and mileage through Sailun technologies
- Suitable for electric vehicles



Durable energy efficiency with high mileage capacity

Size	Ply Rating	Load Index	Speed Rating	EPREL Codes	RR	WG	NG Db	NG	Certificate Type
315/60R22.5	18	154/148	L	1847762	B	A	70	A	M+S/3PMSF
315/70R22.5	18	156/150	L	1883135	B	A	71	A	M+S/3PMSF
315/80R22.5	20	158/150	L	1892754	B	A	70	A	M+S/3PMSF
295/80R22.5	18	154/150	M	1892744	B	A	70	A	M+S/3PMSF

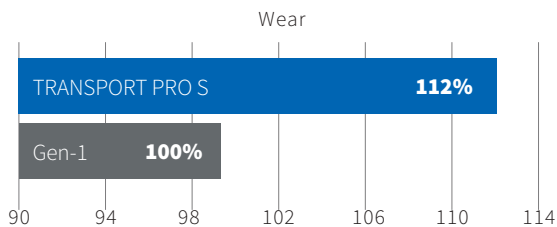
Safety: Innovative bionic tree leaf sipes and groove edge notches enhance wet grip.

Efficiency: Three main grooves and a higher tread block-to-groove ratio effectively reduce rolling resistance. Additionally, the wide tread design maximises the contact patch, thus enhancing rigidity and improving handling stability.

Durability: Optimised tread block dimensions and enhanced tread rigidity prevent irregular shoulder wear to ensure longer tyre life.

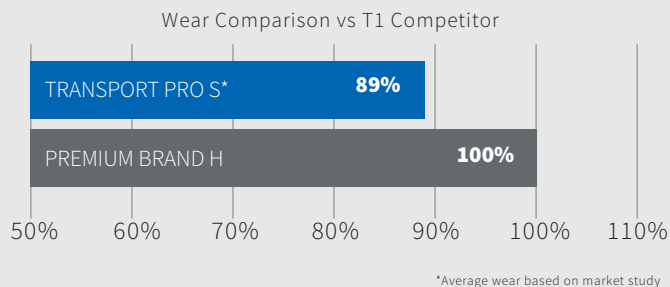
Even Wear and Extended Mileage.

Wide tread design maximises the contact patch for improved stability and wear performance.



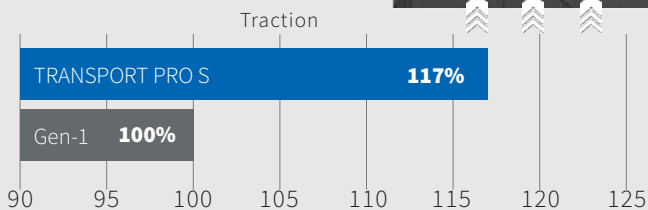
Increased Traction Performance.

Excellent CPK comparable to premium competitor brands.



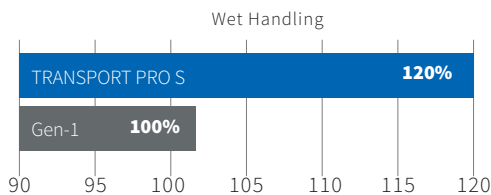
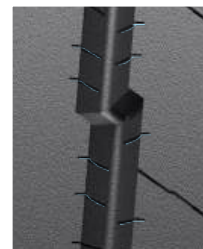
Increased Traction Performance.

Three central grooves with angled designs increase traction on loose or uneven surfaces.



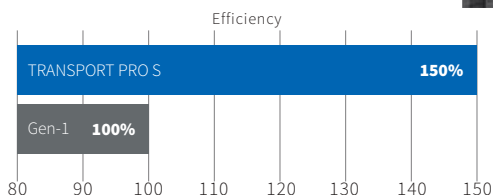
Improved Wet Grip and Safety.

Micro-groove sipes accelerate water evacuation, maximising safety on wet roads.



Optimised Energy Efficiency.

Greater tread block-to-groove ratio effectively reduces rolling resistance and energy consumption.



SAILUN GEN-1

SAILUN EcoPoint³ TRANSPORT PRO S





HYBRID



NEW!

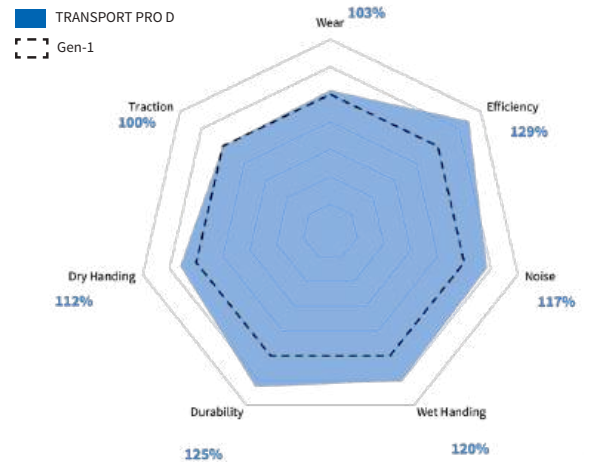
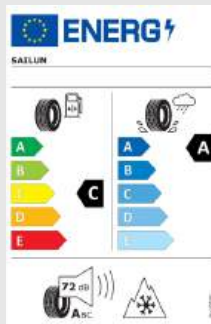


TRANSPORT PRO D



Drive axle tyre designed for motorways, national and regional operations.

- Durability and enhanced fuel savings
- Lower CO₂ impact
- Combined mileage and durability thanks to improved Sailun technologies
- Suitable for electric vehicles



Durable energy efficiency with high mileage capacity

Size	Ply Rating	Load Index	Speed Rating	EPREL Codes	RR	WG	NG Db	NG	Certificate Type
315/60R22.5	18PR	152/148L	L		C	A	72	A	M+S/3PMSF/TRACTION
315/70R22.5	18PR	154/150L(152/148M)	L(M)		C	A	72	A	M+S/3PMSF/TRACTION
315/80R22.5	20PR	156/150L(154/150M)	L(M)		C	A	72	A	M+S/3PMSF/TRACTION
295/80R22.5	18PR	152/149M	M		C	A	72	A	M+S/3PMSF/TRACTION

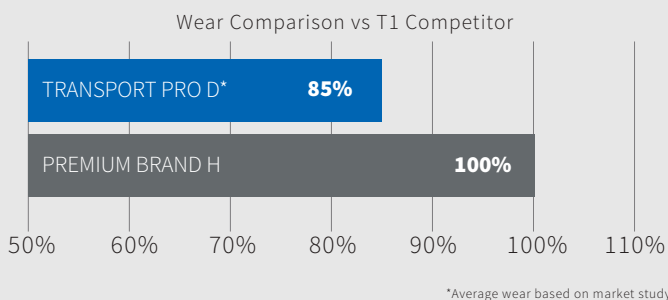
Traction: Open shoulder and lateral groove design deliver superior traction. Full depth 3D sipes provide additional mechanical grip for enhanced wet and snow grip performance, delivering traction and safety in various conditions.

Efficient Mileage: Three main grooves and greater tread block-to-groove ratio reduce rolling resistance. Wide tread design enhances the rigidity and improves handling stability, offering increased mileage.

Wear: Optimised tread block dimensions improve tread rigidity, prevent irregular shoulder wear, and offer longer tyre life. The variable pitch tread design reduces overall rolling noise.

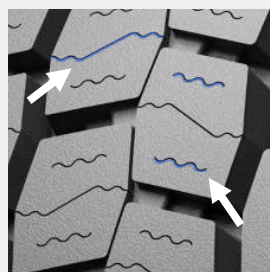
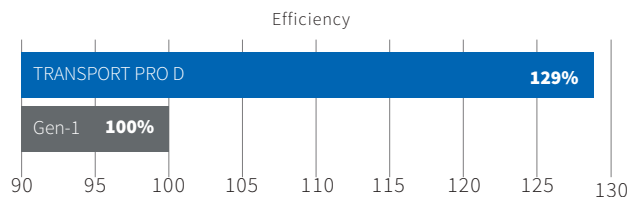
Symmetrical Pattern Design.

Ensures wear and fuel efficiency while also reducing noise and enhancing ease of rotation.



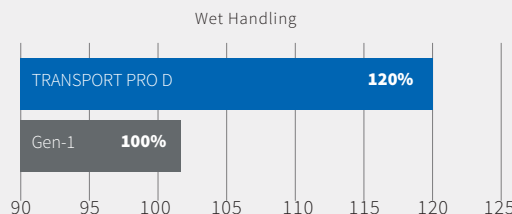
Greater Block-to-Groove Ratio.

Condensed tread blocks and wider footprint reduces rolling resistance and improves energy efficiency.



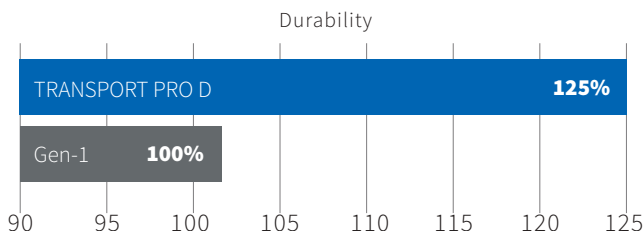
Performance in Diverse Conditions.

Mixed straight and serrated sipes, combined with open shoulders and lateral groove designs, enhance traction in diverse usage conditions. Additionally, 3D full-depth sipes provide extra biting edges for improved wet and snow grip performance.



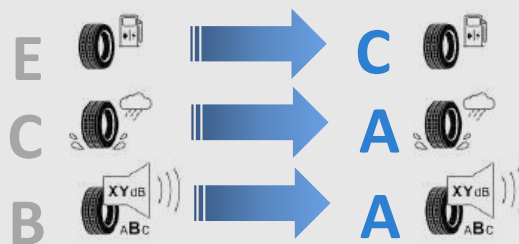
Durability and Efficiency.

Wider tread design enhances tyre rigidity and improves handling stability, offering increased mileage.



SAILUN
GEN-1

SAILUN EcoPoint³
TRANSPORT PRO D





REGIONAL



SFR1



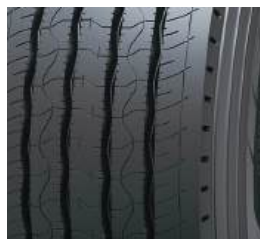
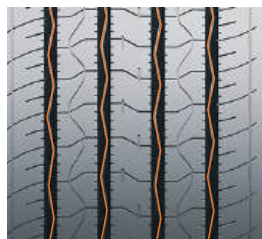
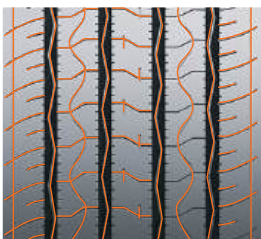
The SFR1 is a steer position tyre suitable for mid to long distance truck and bus application. The tread compound formula improves scrub resistance. Unique shoulder design and deeper shoulder grooves help prevent abnormal tyre wear. Widened running surface provides better tread-to-ground contact area for improved handling.

Size	Ply Rating	Load Index	Speed Rating	EPREL Codes	RR	WG	NG Db	NG	Certificate Type
11R22.5	16	148/145	M	1007455	D	D	73	B	M+S/3PMSF
11R22.5	16	148/145	M	1007455	D	D	73	B	M+S/3PMSF
285/70R19.5	16	146/144(144/142)	L(M)	573634	C	C	73	B	M+S/3PMSF
295/80R22.5	18	154/149	M	573276	C	B	73	B	M+S/3PMSF
315/70R22.5	18	154/150(152/148)	L(M)	573722	C	B	73	B	M+S/3PMSF
315/70R22.5	18	156/150	L	573773	C	B	73	B	M+S/3PMSF
315/80R22.5	18	156/150(154/150)	L(M)	573360	C	B	73	B	M+S/3PMSF
315/80R22.5	20	158/150	L	573409	C	B	73	B	M+S/3PMSF
385/55R22.5	20	160(158)	K(L)	573352	C	C	73	B	M+S/3PMSF
385/65R22.5	20	160(158)	K(L)	573545	C	C	73	B	M+S/3PMSF
385/65R22.5	20	164(158)	K(L)	573560	C	C	73	B	M+S/3PMSF



FEATURES & BENEFITS:

- Shallow pattern grooves provide the tyre with strong grip and skid resistance.
- The widened running surface provides even contact pressure for better handling.
- Zigzag pattern at the bottom of the tread grooves enables better maneuverability and driving comfort.
- The widened shoulder and unique shoulder groove design provide for cool running and reduce uneven wear.





REGIONAL



SDR1



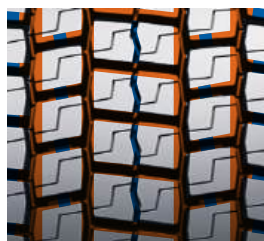
The SDR1 optimised tread formula improves wear resistance by ensuring the tyre runs cool. A rib between the pattern blocks helps reduce partial wear and improve scrub resistance.

Size	Ply Rating	Load Index	Speed Rating	EPREL Codes	RR	WG	NG Db	NG	Certificate Type
11R22.5	16	148/145	L	545948	E	C	75	B	M+S/3PMSF/TRACTION
205/75R17.5	14	124/122	L	554557	E	B	73	A	M+S/3PMSF/TRACTION
215/75R17.5	16	128/126	M	554600	E	B	73	A	M+S/3PMSF/TRACTION
225/70R19.5	14	128/126	L	554595	E	B	73	A	M+S/3PMSF/TRACTION
225/75R17.5	16	129/127	M	574649	E	B	73	A	M+S/3PMSF/TRACTION
235/75R17.5	14	132/130	M	554606	E	B	73	A	M+S/3PMSF/TRACTION
235/75R17.5	16	143/141	K	554589	E	B	73	A	M+S/3PMSF/TRACTION
245/70R17.5	16	136/134	M	557723	E	B	74	B	M+S/3PMSF/TRACTION
245/70R17.5	18	143/141(146/146)	J(F)	557678	E	B	74	B	M+S/3PMSF/TRACTION
245/70R19.5	16	136/134	M	557691	E	B	74	B	M+S/3PMSF/TRACTION
265/70R19.5	16	140/138	M	557968	E	B	74	B	M+S/3PMSF/TRACTION
265/70R19.5	18	143/141	J	558005	E	B	74	B	M+S/3PMSF/TRACTION
285/70R19.5	16	146/144	M	651364	E	B	74	B	M+S/3PMSF/TRACTION
295/80R22.5	16	152/148	M	559264	E	C	75	B	M+S/3PMSF/TRACTION
315/70R22.5	18	154/150(152/148)	L(M)	546870	E	C	75	B	M+S/3PMSF/TRACTION
315/80R22.5	18	156/150(154/150)	L(M)	559288	E	C	75	B	M+S/3PMSF/TRACTION



FEATURES & BENEFITS:

- Widened tread grooves improve self-cleaning capabilities for grip.
- The rib between pattern blocks is designed to improve stiffness and reduce partial wear.
- Widened running surface allows for better driving stability.





REGIONAL



NEW!

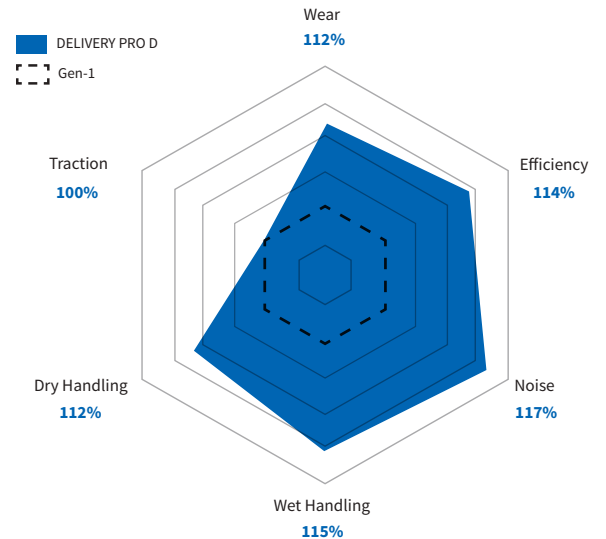
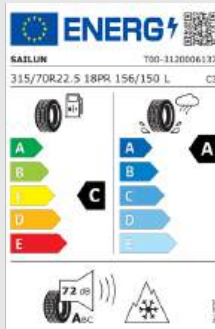


DELIVERY PRO D



Drive axle tyre designed for regional haul operations.

- Designed to deliver outstanding traction and safety
- Durable, abrasion-resistant compound delivering high mileage
- 5-rib directional pattern for all-weather performance



Performance mile after mile

Size	Ply Rating	Load Index	Speed Rating	EPREL Codes	RR	WG	NG Db	NG	Certificate Type
315/80R22.5	18PR	156/150(154/150)	L(M)		C	A	72	A	M+S/3PMSF/TRACTION
315/70R22.5	20PR	156/150(152/148)	L(M)		C	A	72	A	M+S/3PMSF/TRACTION

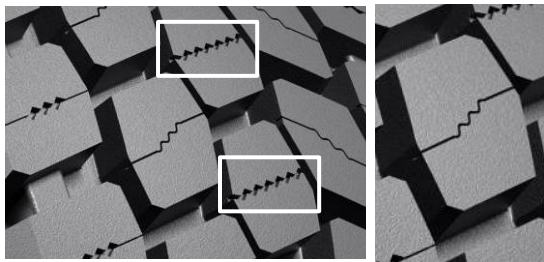
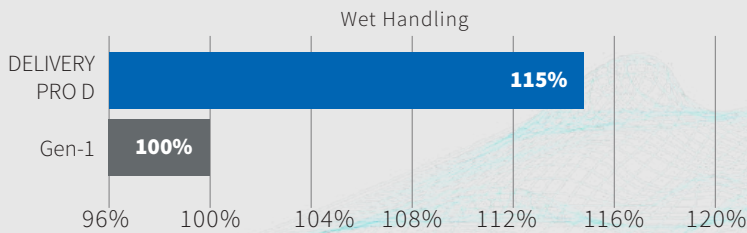
Designed to Deliver Lasting Outstanding Traction and Safety: The 5-rib design performs effectively across multiple road conditions. The deep lateral grooves improve overall driving ability and maintain full life cycle driving performance.

Durable Abrasion Resistant Compound Delivering High Mileage: High mileage and reduced rolling resistance compared with the previous generation of products, the wear and tear is improved, the rolling resistance is reduced, the mileage is increased, and fuel consumption is reduced.

5-Rib Directional Pattern Design for All-Weather Performance: The pattern block adopts a 3D sipe design to increase the grip on slippery roads and snow, and further enhance the safety performance of vehicles.

Exceptional Safety With Best-in-Class Wet Grip.

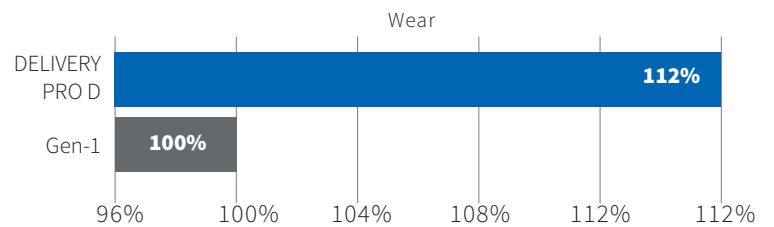
5-rib directional pattern designed to deliver maximum traction and safety as well as improved wet performance.



Full depth (20mm) 3D sipes maintain high levels of traction throughout the life of the product and optimise performance in all-season conditions.

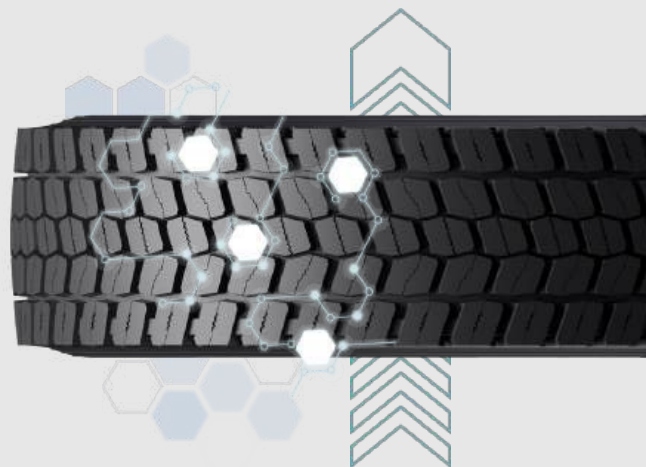
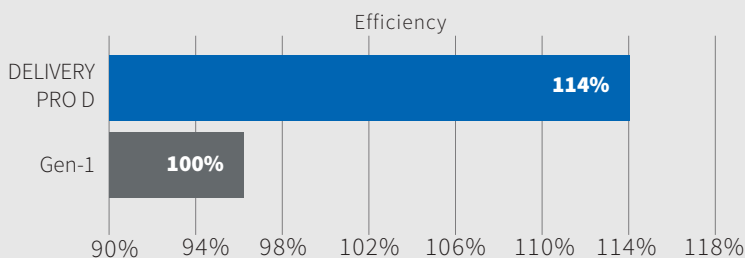
Improved Mileage Compared to Gen-1.

Larger tread blocks and wider grooves increase tyre robustness and enhance mileage.



Durable Tread Compound.

The specialised regional application compound delivers optimised mileage and reduces rolling resistance compared with the previous generation.





REGIONAL



STR1+



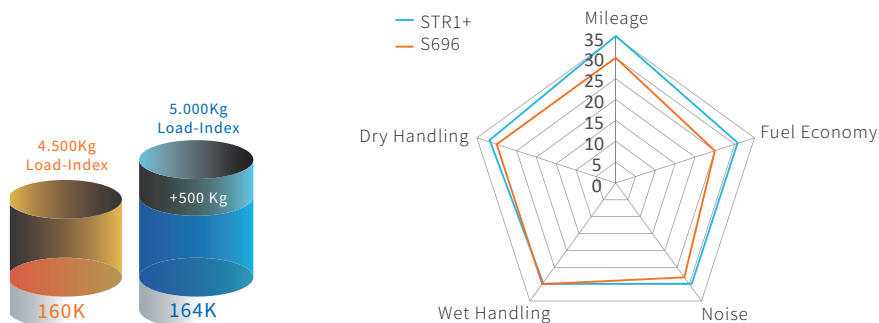
The STR1+ is a trailer position tyre suitable for trucks travelling in regional applications. Specialised tread rubber formula improves wear resistance and rolling resistance. Unique shouldered design prevents uneven wear.

Size	Ply Rating	Load Index	Speed Rating	EPREL Codes	RR	WG	NG Db	NG	Certificate Type
285/70R19.5	18	150/148	K	1394691	C	C	72	B	M+S/3PMSF
385/55R22.5	20	160(158)	K(L)	461526	C	B	72	B	M+S/3PMSF
385/65R22.5	20	160(158)	K(L)	573386	C	C	72	B	M+S/3PMSF
385/65R22.5	20	164(158)	K(L)	573395	C	C	72	B	M+S/3PMSF
435/50R19.5	20	160	J	1394687	C	C	72	B	M+S/3PMSF
445/45R19.5	20	160	J	1394689	C	C	72	B	M+S/3PMSF



FEATURES & BENEFITS:

- Horizontal block grooves improve grip and slip resistance.
- Four main tread grooves provide excellent handling and driving comfort.
- Widened shoulder prevents irregular shoulder wear.





REGIONAL



TRANSPORT PRO T MAX



The TRANSPORT PRO T MAX is a trailer position tyre suitable for trucks travelling in regional applications. This low platform tyre improves load carrying capacity and reduces rolling resistance for more efficient fuel consumption.

Size	Ply Rating	Load Index	Speed Rating	EPREL Codes	RR	WG	NG Db	NG	Certificate Type
205/65R17.5	18	132/130(133/133)	J(F)	1750956	D	B	71	A	M+S/3PMSF
215/75R17.5									
235/75R17.5									
245/70R17.5									

UNDER DEVELOPMENT



FEATURES & BENEFITS:

- Rib design with narrow, sinusoidal grooves, delivering quiet tyre performance and reducing stone trapping.
- New tread compound for abrasion resistance and higher fuel savings.
- Balanced tread design for optimised rolling and retreadability.



REGIONAL



SAR1



The SAR1 is a versatile all-position tyre for regional use featuring five extra-wide ribs for exceptional stability. An extra-wide solid shoulder resists damage during high-scrub applications, while a mirrored tread design ensures even tread wear. Wide grooves effectively improve wet performance while the special tread compound improves tread life.

Size	Ply Rating	Load Index	Speed Rating	EPREL Codes	RR	WG	NG Db	NG	Certificate Type
10R22.5	16	144/142	M	1103717	D	C	72	B	M+S/3PMSF
205/75R17.5	14	124/122	M	574310	D	B	73	B	M+S/3PMSF
215/75R17.5	16	128/126	M	574331	D	B	73	B	M+S/3PMSF
215/75R17.5	16	135/133	L	574198	D	B	73	B	M+S/3PMSF
225/70R19.5	14	128/126	L	574340	D	B	73	B	M+S/3PMSF
225/75R17.5	16	129/127	M	574210	D	B	73	B	M+S/3PMSF
235/75R17.5	14	132/130	M	574385	D	B	73	B	M+S/3PMSF
235/75R17.5	16	143/141	L	574391	D	B	73	B	M+S/3PMSF
245/70R17.5	16	136/134	L	574396	D	B	73	B	M+S/3PMSF
245/70R17.5	18	143/141(146/146)	J(F)	574152	D	B	73	B	M+S/3PMSF
245/70R19.5	16	136/134	M	574170	D	B	73	B	M+S/3PMSF

FEATURES & BENEFITS:

- Tread sipes improve traction in wet conditions and allow the tyre to run cool to extend tread life.
- Shallow tread design reduces rolling resistance for better fuel economy.
- Unique tread wall grooves and sipes help reduce irregular wear.



Size	Ply Rating	Load Index	Speed Rating	EPREL Codes	RR	WG	NG Db	NG	Certificate Type
245/70R19.5	18	141/140	J	1215619	D	B	73	B	M+S/3PMSF
255/70R22.5	16	140/137	M	573724	D	C	73	B	M+S/3PMSF
265/70R19.5	16	140/138	M	573728	D	C	73	B	M+S/3PMSF
265/70R19.5	18	143/141	J	573947	D	C	73	B	M+S/3PMSF
275/70R22.5	16	148/145	M	704164	C	C	71	A	M+S/3PMSF
285/70R19.5	16	146/144	M	546877	D	C	72	B	M+S/3PMSF
285/70R19.5	18	150/148	K	546883	D	C	72	B	M+S/3PMSF
9.5R17.5	16	132/130	M	574243	D	B	73	B	M+S/3PMSF
9.5R17.5	18	143/141	J	574249	D	B	73	B	M+S/3PMSF



ON/OFF ROAD



S711



The S711 special tread design effectively improves self-cleaning capabilities and deepened grooves provide for a longer tread life.

Size	Ply Rating	Load Index	Speed Rating	EPREL Codes	RR	WG	NG Db	NG	Certificate Type
10.00R20	18	149/146	K						M+S/3PMSF/TRACTION
11.00R20	18	152/149	K						M+S/3PMSF/TRACTION
13R22.5	18	156/150	K	461259	D	C	76	B	M+S/3PMSF/TRACTION
315/80R22.5	18	156/150(158/156)	K(G)	573121	D	C	75	B	M+S/3PMSF/TRACTION
7.50R16LT	14	122/118	K						M+S/3PMSF/TRACTION



FEATURES & BENEFITS:

- Narrow grooves increase tread rigidity and improve scrub resistance.
- The deep sinusoidal grooves extend from the shoulder to the centre of the tyre improving traction in challenging conditions.
- The small rib design between pattern blocks prevents tread movement ensuring even tread wear throughout long tyre life.





ON/OFF ROAD



SDM1



The SDM1 bead is designed to improve durability while the special tread design reduces stone retention while improving traction.

Size	Ply Rating	Load Index	Speed Rating	EPREL Codes	RR	WG	NG Db	NG	Certificate Type
13R22.5	18	156/150	K						M+S/3PMSF/POR
315/70R22.5	18	156/150	K						M+S/3PMSF/POR/ TRACTION
315/80R22.5	20	156/153	K						M+S/3PMSF/POR



FEATURES & BENEFITS:

- The small grooves between the blocks allow the tyre to run cool and improve uniform tread wear.
- The deep grooves deliver a longer tyre life.
- The tread pattern is designed to improve block rigidity and provide consistency on the tyre shoulder to ensure uniform wear.





ON/OFF ROAD



SDM1S



The large tread blocks with deep grooves provide excellent resistance to puncturing and chunking whilst also delivering excellent traction. The groove design effectively reduces stone retention to improve casing protection and tread life. The tyre excels in poor road conditions.

Size	Ply Rating	Load Index	Speed Rating	EPREL Codes	RR	WG	NG Db	NG	Certificate Type
315/80R22.5	18	156/150(154/150)	K(L)	546958	E	A	76	B	M+S/3PMSF/TRACTION



FEATURES & BENEFITS:

- The bottom of the groove utilises reinforcing ribs to reduce stone retention and protect the tyre casing.
- The Sailun tread compound formulation improves puncture, cut, and abrasion resistance.





ON/OFF ROAD



S913A



The S913A is a drive position tyre suitable for trucks driving in mixed service applications.

Size	Ply Rating	Load Index	Speed Rating	EPREL Codes	RR	WG	NG Db	NG	Certificate Type
315/80R22.5	20	156/153	K						M+S/3PMSF/POR



FEATURES & BENEFITS:

- Aggressive, deep tread pattern made with a durable tread compound.
- Angled grooves reduce stone retention.
- Strong casing and strengthened tread blocks improve traction, while also improving wear, cut, and chip resistance.
- The Sailun rubber compound delivers a long tread life.





ON/OFF ROAD



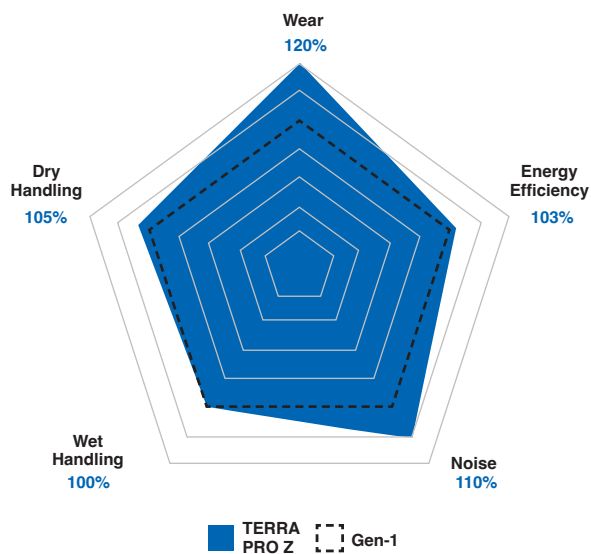
NEW!



TERRA PRO Z



- More mileage and reduced downtime.
- Keep vehicles and drivers safe.
- Durable design for all conditions.



All terrains, one tyre

Size	Ply Rating	Load Index	Speed Rating	EPREL Codes	RR	WG	NG Db	NG	Certificate Type
315/80R22.5	18	156/150	K	2356890	C	A	70	A	M+S/3PMSF
295/80R22.5	18	154/149	K	2355709	C	B	70	A	M+S/3PMSF
13R22.5	18	156/150	K	2356752	C	A	70	A	M+S/3PMSF

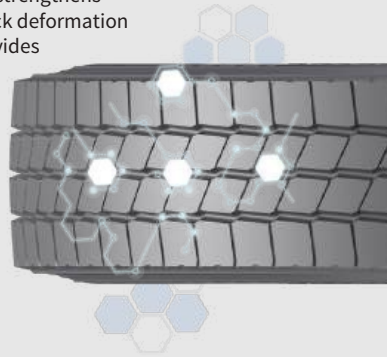
Control Costs: Reinforced tread compound delivering longer life in tough mixed-service conditions.

Certified Quality: Closed shoulder design for versatility and confident grip on and off the road.

Versatile Design: Robust construction and damage resistance, minimising downtime to keep your fleet moving.

Tough Compound for Maximum Uptime.

Specially engineered tread formula strengthens the crown area to resist tearing, block deformation and reduces heat build-up. This provides a longer life and consistent performance in demanding mixed-service conditions.



Robust 4-rib Tread Design for Harsh Conditions and Outstanding All-Weather Grip.

A precision-engineered combination of deep longitudinal main grooves and shallow transverse sipes enhances wet traction while actively preventing irregular tread wear – delivering safety and durability across changing road conditions.



Reinforced Structure for Enhanced Durability.

A robust four-belt structure resists irregular wear and boosts overall tread life. This advanced design also improves ride stability and comfort, even under the stress of mixed-service applications.



Closed Shoulder Design for Versatile Road Grip.

A reinforced closed shoulder enhances stability across varied road conditions – boosting traction and minimising edge wear.

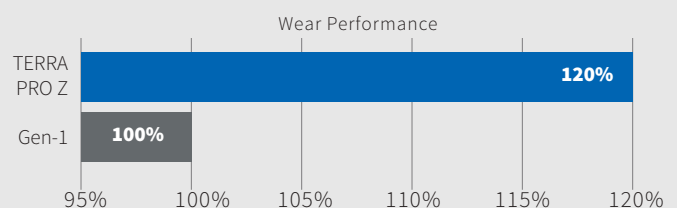
Self-Cleaning Groove Design.

Knurled groove edges prevent build-up of mud and debris helping to maintain traction in difficult conditions.



Wider Footprint for Longevity.

A broadened contact patch with high pattern saturation enhances load distribution and tread rigidity – improving wear resistance and extending mileage performance under demanding mixed-service use.





ON/OFF ROAD



S815



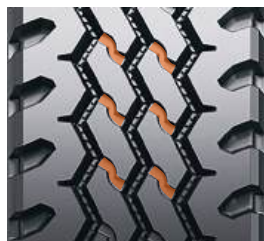
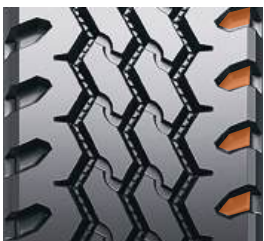
The S815 is a mixed service tread tyre featuring a chip resistant compound ideally suited for off-road and construction applications. A sinusoidal main groove pattern reduces stone retention, whilst maximising traction under all applications. Sidewall protectors are engineered to provide an enhanced casing protection.

Size	Ply Rating	Load Index	Speed Rating	EPREL Codes	RR	WG	NG Db	NG	Certificate Type
11R22.5	16	148/145	L	556046	D	C	73	B	M+S/3PMSF
13R22.5	18	156/150	L	545912	D	C	73	B	M+S/3PMSF
275/70R22.5	16	148/145	K	704175	C	C	74	B	M+S/3PMSF
295/80R22.5	18	154/149	K	857747	D	C	73	B	M+S/3PMSF
315/80R22.5	18	156/150(154/150)	L(M)	547023	D	C	73	B	M+S/3PMSF



FEATURES & BENEFITS:

- Large deep shoulder groove improves traction and prevents heat build up for effective performance and long tyre life.
- Interlocking lugs promote stability and deliver even wear.
- Wide footprint and unique shoulder design deliver a consistent contact patch for all condition performance and traction.
- Specially formulated compound and deep tread depth improve tread life.





ON/OFF ROAD



S825



The S825 is an all-position mixed service tyre engineered with a special rubber compound which improves scrub resistance. The stone ejectors within the grooves reduce stone retention while the the angled tread blocks deliver excellent wet traction.

Size	Ply Rating	Load Index	Speed Rating	EPREL Codes	RR	WG	NG Db	NG	Certificate Type
385/65R22.5	20	160(158)	K(L)	572913	D	B	72	B	M+S/3PMSF



FEATURES & BENEFITS:

- Interlocking lugs improve stability and uniform wear.
- Stone ejectors reduce stone retention protecting the casing.
- Wide footprint and unique shoulder design improve stability.
- Special rubber compound improves tread life.





ON/OFF ROAD



STM1



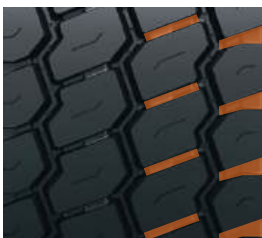
The STM1 is suitable for short-mid ranged vehicles driving on mixed service roads. The reinforced bead construction enhances durability.

Size	Ply Rating	Load Index	Speed Rating	EPREL Codes	RR	WG	NG Db	NG	Certificate Type
265/70R19.5	18	143/141	J	461816	D	C	75	B	M+S/3PMSF/TRACTION
385/65R22.5	20	160(158)	K(L)	569877	D	C	72	A	M+S/3PMSF/TRACTION
445/65R22.5	20	169	K	569883	D	C	73	A	M+S/3PMSF/TRACTION
445/65R22.5	20	169	K	569883	D	C	73	A	M+S/3PMSF/TRACTION



FEATURES & BENEFITS:

- The open shoulder design allows the tyre to run cool.
- The strengthened shoulder ribs together with the protrusions within the grooves improve abrasion resistance and deliver uniform wear.
- The unique groove design ensures driving stability and improves self-cleaning capabilities, for improved traction.
- The grip angle of the tyre reduces rolling resistance for improved fuel economy, lowering operating costs.
- Unique tread formula effectively improves puncture resistance maximising up-time.
- The durable tread pattern grooves improve handling and grip.





TOUR PRO Z



- Versatility in all seasons
- Excellent mileage
- Low carbon footprint

Safe and efficient passenger travel.

Size	Ply Rating	Load Index	Speed Rating	EPREL Codes	RR	WG	NG Db	NG	Certificate Type
295/80R22.5	18	152/149M	M	1752135	B	A	73	B	M+S/3PMSF



FEATURES & BENEFITS:

- **Safety and Reliability:**
Optimised profile design A rated for wet grip, ensures prolonged safe driving.
- **Maximum Efficiency:**
Pattern design and long-distance compound delivers lower rolling resistance, reducing energy consumption.
- **Increased Mileage:**
Four angular grooves combined with a new tread compound delivers exceptional tyre longevity.



OFF ROAD



SD01



The SD01 is a drive tyre engineered to work in demanding applications such as mining, construction, and logging. The tread design is an aggressive multi-lug design which provides exceptional off-road traction while the enhanced rubber compound improves cut and chunking resistance. The open shoulder design delivers superior stability and uniform wear. The deep tread depth offers a longer tread life and exceptional fuel efficiency.

Size	Ply Rating	Load Index	Speed Rating	EPREL Codes	RR	WG	NG Db	NG	Certificate Type
13R22.5	18	156/150	G						M+S/3PMSF/POR
295/80R22.5	16	152/148	J						M+S/3PMSF/POR
315/80R22.5	18	156/150(154/150)	G(J)						M+S/3PMSF/POR



FEATURES & BENEFITS:

- Aggressive multi-lug design.
- Deeper tread for a longer tread life.





URBAN

NEW!

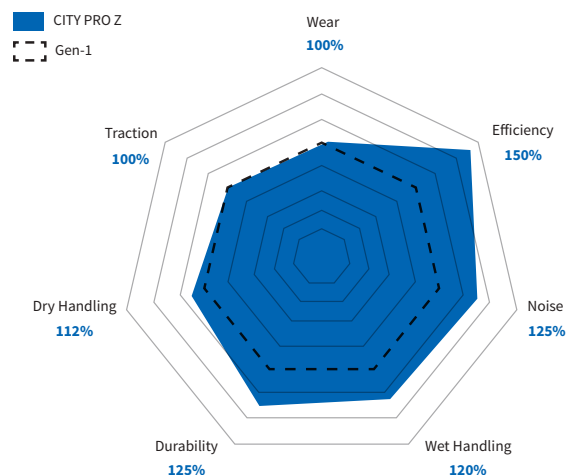
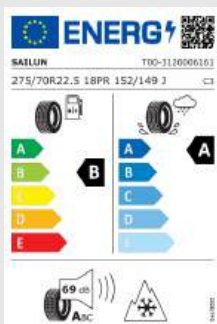


CITY PRO Z



All position tyre designed for stop-start urban operations.

- Reduce fuel consumption
- Safe and smooth driving in urban applications
- Low carbon footprint
- Suitable for electric vehicles



Minimise costs and maximise safety

Size	Ply Rating	Load Index	Speed Rating	EPREL Codes	RR	WG	NG Db	NG	Certificate Type
275/70R22.5	18PR	152/149	J		B	A	69	A	M+S/3PMSF

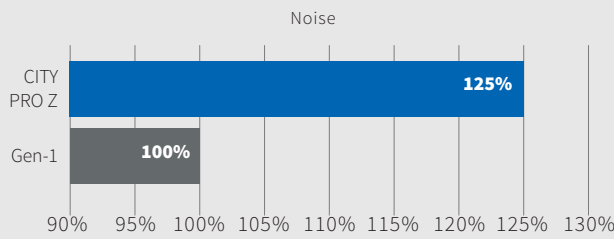
Safety and Reduced Noise: Bionic sipe design provides superior grip performance ensuring a safer driving experience. Additionally, the Sailun designed pattern minimises noise levels, offering greater comfort to passengers.

Lowest Rolling Resistance: The Sailun EcoPoint³ technology combined with wider tread block design decreases rolling resistance by 10% and simultaneously offers a 5% longer life.

High Load Capacity: Optimised and strengthened carcass structure provides a 15% increased load capacity compared to City Convoy. Also suitable for 8-ton axles.

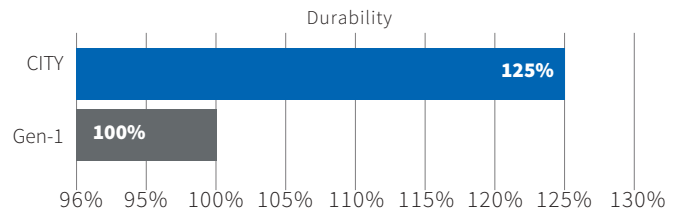
Pattern Designed to Reduce Noise Levels.

Special sleek bionic pattern design minimises external rolling noise levels, offering a more comfortable passenger ride and achieving the highest EU label grade A.



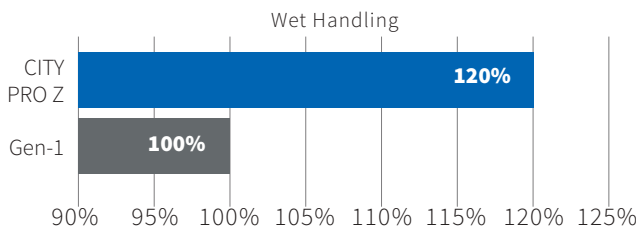
Reinforced with Dual Kerbing Bands.

City Pro Z maintains a 30% thicker sidewall compared to conventional products and a 25% improvement in overall durability. The dimple feature of the kerbing bands provides a clear, visible indication of the remaining sidewall protection as the tyre wears.



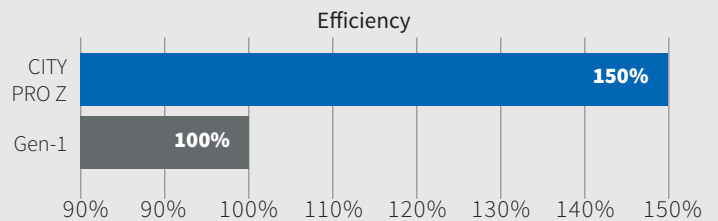
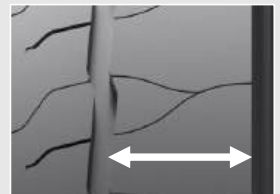
Bionic Sipe Design.

Provides superior grip for safer driving, especially in wet conditions.



Ecopoint³ Urban Compound.

Ultra-low rolling resistance compound and extra-wide shoulder ribs increase fuel efficiency by 10%.



Optimised Casing Structure.

Enhanced load capacity by +15% for heavier electric and hybrid vehicles.

Load Capacity +15%



URBAN



CITY CONVOY



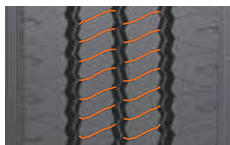
The City Convoy is developed for urban roads and provides strong traction and braking performance. The enhanced shoulder and tread design improves overall wear resistance. The reinforced sidewall protection improves scrub resistance, effectively protecting the tyre carcass and maximising tyre life.

Size	Ply Rating	Load Index	Speed Rating	EPREL Codes	RR	WG	NG Db	NG	Certificate Type
275/70R22.5	16	148/145(152/148)	J(F)	656571	D	C	72	B	M+S/3PMSF
275/70R22.5	16	148/145(152/148)	J(F)		D	C	72	B	M+S/3PMSF
295/80R22.5	18	152/149	K	559270	D	C	72	B	M+S/3PMSF



FEATURES & BENEFITS:

- The sidewall protector is designed to improve service life by countering potential damage caused by kerbs and other road hazards encountered by public transportation vehicles.
- Sipe design effectively increases contact area between the tread and road surface, which enhances grip and reduces skidding for greater driving safety.
- Shoulder notch design allows the tyre to run cool for better durability.
- Optimised tread pattern design to reduce tyre noise and improve driving comfort.

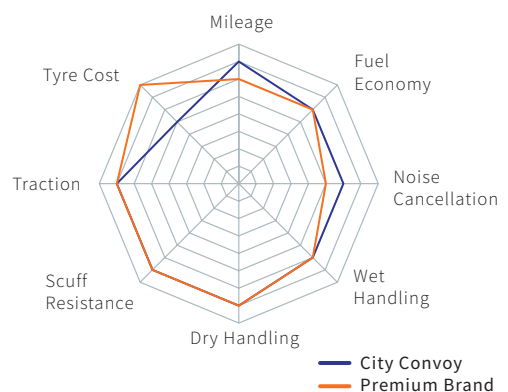


Cost Per 1000 KM

- High saving potential thanks to low costs per mileage



■ Premium Brand ■ City Convoy





WINTER



SDW1



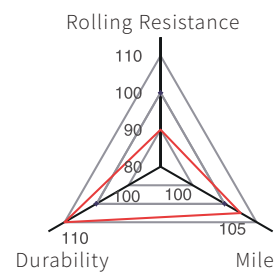
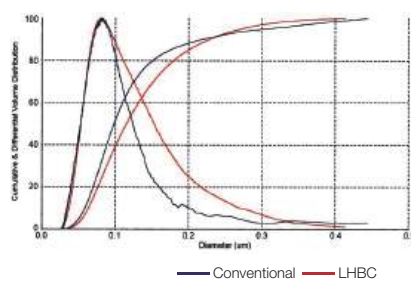
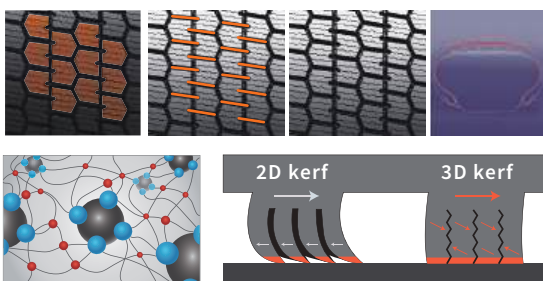
The SDW1 is designed with a cold resistant tread compound. The tread pattern design employs multiple grooves and sipes for greater driving capabilities on snow and ice. A winter weather specific tread formula, combined with the multi-block groove design, safely and effectively discharges snow. The zigzag sipes improve the tread contact area for greater block rigidity and improved grip on snow and ice.

Size	Ply Rating	Load Index	Speed Rating	EPREL Codes	RR	WG	NG Db	NG	Certificate Type
295/80R22.5	18	152/149	L	546911	D	C	73	A	M+S/3PMSF/TRACTION
315/70R22.5	18	154/150(152/148)	L(M)	546915	D	C	73	A	M+S/3PMSF/TRACTION
315/80R22.5	18	156/150(154/150)	L(M)	546922	D	C	73	A	M+S/3PMSF/TRACTION



FEATURES & BENEFITS:

- Zigzag sipes design improves winter weather grip.
- Cold-resistant tread compound and tread pattern grooves improve snow and ice traction.
- Special tread compound formulation improves winter weather safety.
- Cold rubber tread maintains flexibility and normal capabilities in low temperatures.
- 3D kerfs result in improved stability on the road and help to increase surface contact area across the tread.
- A reinforced tread compound improves mileage, durability, rolling resistance, heat build-up and maintains grip characteristics throughout tyre life.





WINTER



SDW1 NORDIC



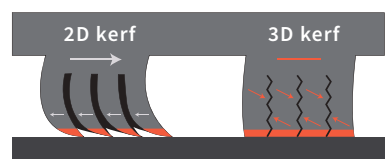
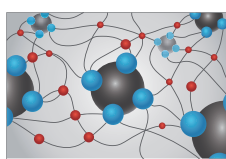
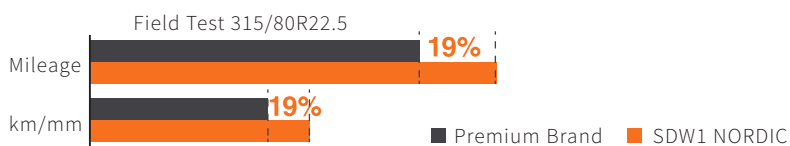
The SDW1 NORDIC is built for superior performance in all winter conditions, featuring an advanced anti-slip, cold-resistant tread formula. Its specialised tread pattern enhances grip and traction on snow and ice, while the unique groove design increases the tyre's contact area, improving both traction and slip resistance on icy surfaces.

Size	Ply Rating	Load Index	Speed Rating	EPREL Codes	RR	WG	NG Db	NG	Certificate Type
265/70R19.5	18	143/141	J	983084	E	C	76	B	M+S/3PMSF/TRACTION
275/70R22.5	18	150/145(152/148)	J(F)	983051	E	C	76	B	M+S/3PMSF/TRACTION
315/70R22.5	18	156/150	L	747164	E	C	76	B	M+S/3PMSF/TRACTION
315/80R22.5	18	156/150	L	731578	E	C	76	B	M+S/3PMSF/TRACTION



FEATURES & BENEFITS:

- Unique groove design effectively drains snow for improved grip and slip-resistance on ice and snow.
- The winter tread compound maintains flexibility and normal capabilities in low temperatures whilst the tread grooves and sipes improve driving safety on ice and snow.
- 3D kerfs result in improved stability on the road and help to increase surface contact area across the tread.





WINTER



SAW1



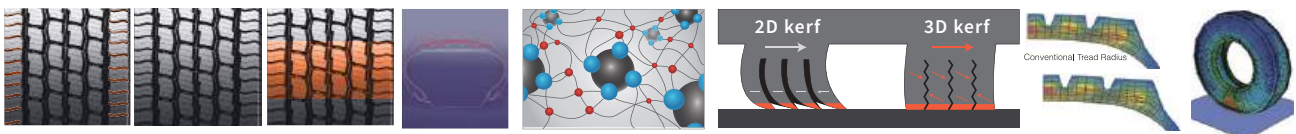
The new SAW1 is an all-position speciality winter tyre that improves handling on ice and snow. The wide tread width and five main grooves increase the tyre’s contact area and improve grip. Certified 3PMSF and M&S marked, the tyre delivers exceptional winter performance. The unique sipe pattern and open shoulder design effectively evacuate water delivering excellent grip.

Size	Ply Rating	Load Index	Speed Rating	EPREL Codes	RR	WG	NG Db	NG	Certificate Type
295/80R22.5	16	152/148	M	573401	E	C	74	B	M+S/3PMSF
315/70R22.5	18	154/150(152/148)	L(M)	546940	E	C	74	B	M+S/3PMSF
315/80R22.5	18	156/150(154/150)	L(M)	546946	E	C	74	B	M+S/3PMSF
385/55R22.5	20	160(158)	K(L)	547162	E	C	74	B	M+S/3PMSF
385/65R22.5	20	160(158)	K(L)	547157	E	C	74	B	M+S/3PMSF



FEATURES & BENEFITS:

- Unique serrated sipe design improves tyre ground contact area, pattern rigidity, and offers better grip.
- Open lateral grooves provide excellent driving performance.
- Widened tread and five main grooves improve ground contact area and grip.
- Cold rubber tread maintains flexibility and performance capabilities in low temperatures.
- 3D kerfs result in improved stability on the road and help to increase surface contact area across the tread.
- The computer simulated tread radius ensures uniform road contact for tyre performance, even wear and tread durability.
- Dual tread radius design reduces heat generation in the shoulder blocks.





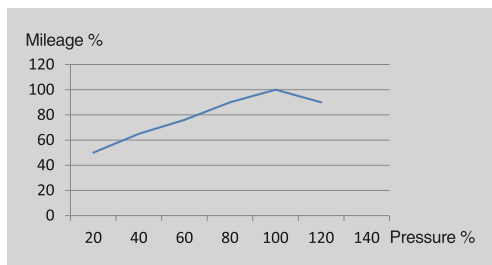
Important Tips for Optimal Tyre Performance:

- ❶ Maintain optimum air pressure
- ❷ Inspect tread grooves to ensure tyres are safe and legal
- ❸ Visually check for tyre damage

Ensure you check your tyres once a month and before long trips to maintain performance and ensure safety.

Why is it important I have the correct tyre pressure?

A tyre at optimum air pressure will ensure your safety, provide greater driving performance, improve tyre life and reduce fuel consumption. Mileage, environment, and temperature changes all affect the pressure of your tyres. An over-inflated tyre will increase tyre stiffness which influences driving comfort and can cause unnecessary reverberations. This can also increase the probability of tyre damage and accelerate tread wear.



Note: Statistics are from the China National Rubber Tyre Quality Supervision and Inspection Center <<Vehicle Tyre Usage and Case Analysis>>

Optimum Tyre Pressure

Maintaining proper tyre pressure is the most important way to extend the life and durability of your tyres. Under-inflation is the main reason for a majority of serious tyre ruptures, delamination, or punctures. A low tyre pressure can reduce the load bearing capabilities of a tyre, increase shoulder wear, cause excessive bending in the sidewall, and reduce rolling resistance resulting in overheating or internal damage.

How do I check my tyre pressure?

- 1) Make sure to purchase a certified air pressure gauge.
- 2) Tyres must be checked in a cold state (at least three hours after driving).
- 3) Insert the gauge into the valve.
- 4) Compare the measured air pressure level with the optimum tyre pressure.



Why is it important I check for tyre wear?

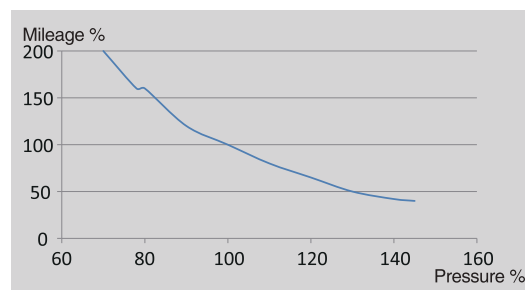
When the tread depth of your tyre reaches 1.6mm, be sure to replace or re-tread them immediately. All new tyres have a wear mark indicator, and when the tread is finally moved down to that level, the smooth surface of the tread groove will reveal the wear mark. Most of the accidents in wet weather are caused by worn-out tyres, while excessive wear is also more likely to cause punctures.

Why is it important I check for tyre damage?

A tyre with any signs of damage is susceptible to tyre separation, puncturing, etc., therefore it is extremely important to often check for signs of damage on your tyres (at least once a month). If in doubt, let a tyre dealer check for you. If you find any abnormal damage, wear, ruptures, bulges, or leaks you should immediately remove the tyre for inspection. Do not do any temporary repairs or use the inner tube to substitute for correct/certified repairs.

Over-loading vehicles will cause tyres and other parts of the vehicle to take on additional pressure.

To know your vehicle loading limits, check the owner's manual. Over-loaded vehicles will cause tyres and other parts of the vehicle take on additional pressure. This will reduce handling, fuel economy, and possibly cause tyre failure. An overloaded tyre is also susceptible to serious ruptures, component separation or punctures. The load capacity of the new tyre should not be lower than the capacity marked on the tyre label, and remember that the optimum rim width is critical to proper load distribution and tyre performance. When used on light trucks, multipurpose vehicle or trailers, the maximum load capacity marked on the sidewall of the tyre should be reduced by 10%

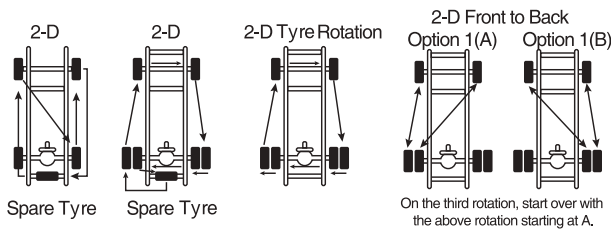


Note: Statistics are from the China National Rubber Tyre Quality Supervision and Inspection Center <<Vehicle Tyre Usage and Case Analysis>>

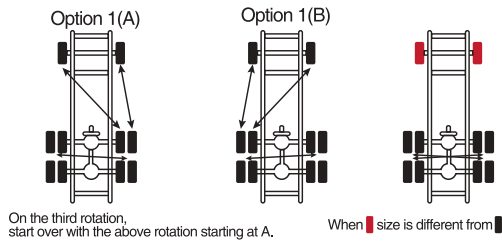
Suspension Maintenance, Wheel Positioning and Dynamic Balancing, and Tyre Rotation

Non-periodic tyre replacement, suspension parts wear, dynamic balance, misalignment all will lead to excessive vibration or uneven wear. Tyre rotation should be done according to the recommendations of the vehicle manufacturer, or at least every 10,000 km.

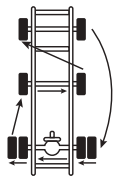
Truck / Bus Tyre Rotation Diagram



2-D*D 2-D*4(Front to Back)

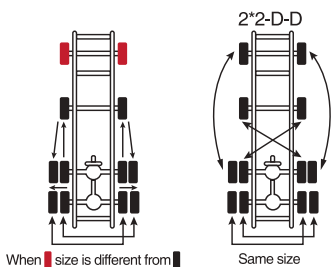
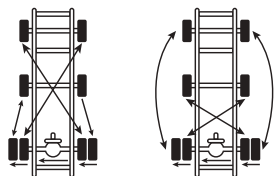


2*2-D Tyre Rotation



If the front and back axle wheel sizes are different, you should only rotate them in positions with the same sizes.

2*2-D (Front to Back)



The Importance of Tyre Replacement

A timely tyre replacement is critical to driver safety and also influences vehicle lifespan and performance. You should replace a tyre if you see any tyre erosion or problems that are impossible to repair.

WARNING

Before replacing the tyres, be sure to refer to the owner's manual and follow the advice of the vehicle manufacturer regarding the replacement of the tyres.

Replacing the size or type of tyres will seriously affect the vehicle's operating and safety performance.

When selecting other tyres that are different from the originally installed tyres, consult a professional installer to ensure that the appropriate installation spacing, load capacity and inflation pressure are selected. You should not exceed the maximum load and inflation pressure marked on the sidewall of the tyre.

When replacing tyres, you must use tyres with the same outer diameter and load capacity. Make sure to adjust the inflation pressure to avoid overloading your tyres.

For correct load and inflation data, see the Tyre and Rim Association's Load and Inflation Tables, ETRTO or JATMA standards.

Tyre Storage Methods

Before putting your tyre(s) in storage, check for signs of abrasion and/or damage and store according to the following directions.



User Information for Truck and Bus Tyres

1. Always deflate the tyre completely before removing lugs or side rings.
2. Never use rim parts of different manufacturers or different sizes.
3. Never mount tyres on rims which are damaged or not smooth and clean.
4. Always clean and inspect the rim. Lubricate beads and rim flanges for tubeless tyres with an approved rubber lubricant.
5. Always be sure that rim components are properly seated before inflating.

